

PRODUCT INSTALLATION GUIDE

Enfield Monte Carlo Stock No. 4 MK 1, 2 & 5

HARDWARE INCLUDED

 NON APPLICABLE

 NON APPLICABLE



TOOLS Needed

 Phillips Head Screwdriver



Warning: When handling a firearm, always follow the proper handling procedures at all times. Failure to follow these procedures could result in serious damage, injury, or death. We are not responsible for damage to property, injury, or death resulting from improper installation, misuse or modification of products. If you are not comfortable completing any of the following steps, or do not have the proper tools enlist the help of your local gunsmith. We are not responsible for components that are damaged due to improper installation.



1

Using a phillips head screwdriver, remove the butt pad from the new ATI Monte Carlo Stock as seen in Figure 1.



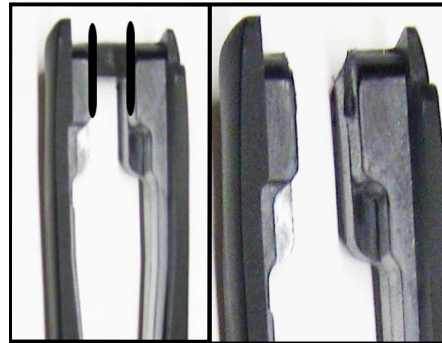
4

Lay the rifle on a work bench or a table and work the new ATI Monte Carlo forearm over the barreled action as seen in Figure 4. Do not fasten the forearm at this point.



2

Install the new buttstock using the original rear attaching stock bolt. Tighten the bolt, and secure the new buttstock to the rifle as seen in Figure 2.



5

If you experience difficulty installing the new ATI forend, look at the rear opening of your wooden forend. You may have to cut out the bridge of your new ATI Monte Carlo stock to match the original configuration and ensure proper fit as seen in Figure 5.



3

Next, using a phillips head screwdriver and the screws removed in Figure 1, reinstall the butt pad to the rear of the buttstock as seen in Figure 3.



6

Next, align the trigger guard back into the place so the trigger is properly engaged with the sear as seen in Figure 6.

LIMITED LIFE TIME WARRANTY

MADE IN
THE USA

LIMITED LIFE TIME WARRANTY

PRODUCT INSTALLATION GUIDE

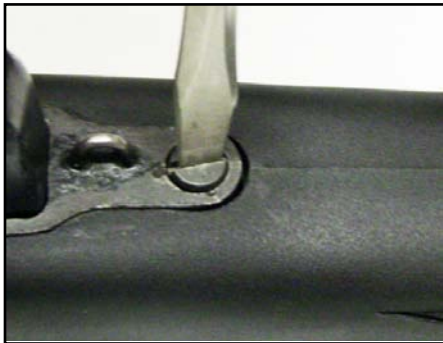
Enfield Monte Carlo Stock No. 4 MK 1, 2 & 5

PAGE 2



7

Align the original trigger guard rear screw with the trigger guard screw hole. Begin to thread the screw in place but do not tighten all the way as seen in Figure 7.
NOTE: Do not full tighten the rear screw until you have aligned and tightened the trigger guard front screw.



8

Insert the original trigger guard front screw and using a flat head screwdriver, completely tighten the screw as seen in Figure 8. Once the front screw is fastened, you can now go back and completely fasten the rear trigger guard screw.

