



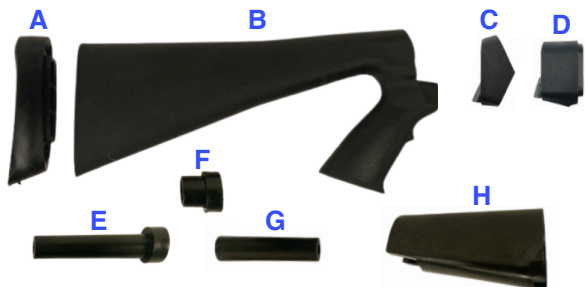
Shotforce Pistol Grip Stock



Warning:

When handling a firearm, always follow the proper handling procedures at all times. Failure to follow these procedures could result in serious damage, injury, or death. WE are not responsible for damage to property, injury, or death resulting from improper installation, misuse or modification of products. If you are not comfortable completing any of the following steps, or do not have the proper tools enlist the help of your local gunsmith. We are not responsible for components that are damaged due to improper installation.

Parts List



- | | |
|--------------------------------------|----------------------|
| A. Recoil Pad | E. SPG-0114 Spacer |
| B. Stock Body | F. SPG-0112 Spacer |
| C. Winchester 1200/1300 Grip Adapter | G. SPG-0113 Spacer |
| D. Remington 870 Grip Adapter | H. SPG-0111 Platform |

Hardware List



1. Screw #8 x 1 1/4" (2)
2. Sling Stud 3/8"

1 Original Stock Removal

Figure 1

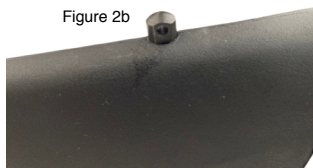
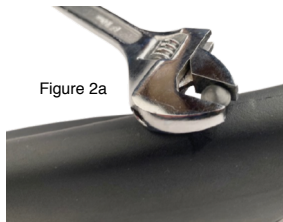
Begin by removing the existing recoil pad from your stock using a Phillips head screwdriver. Next using a long flat head screwdriver or appropriate socket remove the stock bolt. You can now remove the old stock from the receiver as shown in (Figure 1).



2 Sling Stud Installation

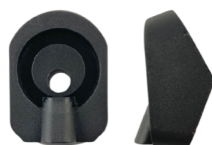
Figure 2a

Figure 2b



Begin by turning the stock upside down and installing the sling stud (#2) into the hole on the bottom of the buttstock. Using an adjustable wrench as seen in (Figure 2a), tighten the sling stud until seated as seen in (Figure 2b).

3 Adapter Installation



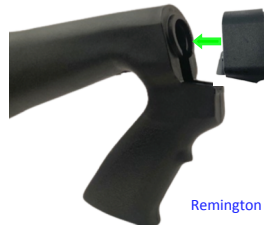
Winchester 1200/1300 12ga



Remington 870 12GA

Figure 3a

Figure 3b



Remington 870 12GA Example

Place the appropriate adapter from above into the pistol grip as seen in (Figure 3a). (For example purposes, we are using the Remington adapter). Press the adapter into place as seen in (Figure 3b). Note: The Mossberg requires no adapter and will seat directly to the receiver.

4 Spacer Configuration

Mossberg/Maverick Spacer Configuration



Winchester Spacer Configuration



The Mossberg/Maverick uses the original stock bolt and platform SPG-0111(H) and the SPG-0112 spacer (F) as seen in (Figure 4a). The Winchester uses the original bolt and platform SPG-0111(H) as seen in (Figure 4b).



Shotforce Pistol Grip Stock



Warning:

When handling a firearm, always follow the proper handling procedures at all times. Failure to follow these procedures could result in serious damage, injury, or death. WE are not responsible for damage to property, injury, or death resulting from improper installation, misuse or modification of products. If you are not comfortable completing any of the following steps, or do not have the proper tools enlist the help of your local gunsmith. We are not responsible for components that are damaged due to improper installation.

Norinco Spacer Configuration

Figure 4c



The Norinco 98 uses the original metric stock bolt and uses the SPG-01111(H) platform and the SPG-0114 spacer (E) cut to 1 1/4" length as seen in (Figure 4c). NOTE: All of the parts must be pushed together before inserting into the pistol grip buttstock.

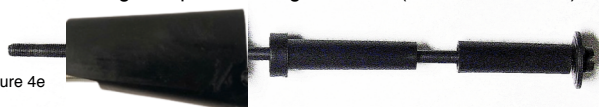
Remington Spacer Configuration w/ (8" OEM Bolt)

Figure 4d



Remington Spacer Configuration w/ (10 1/8" OEM Bolt)

Figure 4e



The 8" OEM Remington bolt will use the SPG-01111 platform (H) and the SPG-0114 spacer (E) as seen in (Figure 4d). The 10" OEM Remington bolt will use the SPG-0111 platform (H), the SPG-0114 spacer (E) and the SPG-0113 spacer (G) as seen in (Figure 4e). NOTE: All of the parts must be pushed together before inserting into the pistol grip buttstock.

5 Buttstock to Receiver Installation

Figure 5a

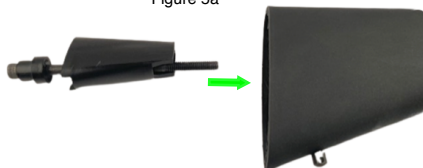


Figure 5b



After placing the correct adapter between the buttstock and receiver, (Mossberg will use no adapter) place the correct bolt and platform/spacers as seen in (Figure 5a) into the buttstock as seen in (Figure 5b).

5 Buttstock to Receiver Installation Contin.

Figure 5c



Figure 5d



With the stock flush against the receiver as seen in (Figure 5c), secure the stock by tightening the stock bolt with a extended allen driver or socket as seen in (Figure 5d).

6 Recoil Pad Installation

Figure 6a

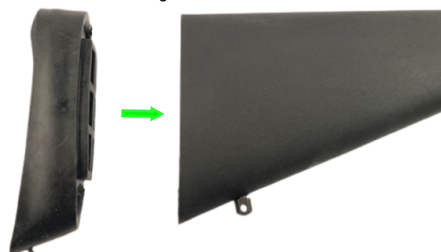
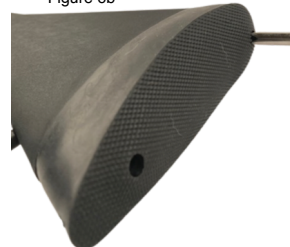


Figure 6b



Place the new recoil pad as seen in (Figure 6a), onto the rear of the buttstock and secure with the provided (2) #8 x 1 1/4" screws (#1) using a phillips head screw driver until snug as seen in (Figure 6b).

**You're finished.
Now enjoy your New Product!**

**Add additional ATI Accessories to
your Builds!**